

Now, from Amkor Electronics  
GET ALL THE SAVINGS  
OF OFFSHORE ELECTRONIC  
ASSEMBLY WITH SPEED,  
EFFICIENCY AND YIELD  
THAT WOULD BE HARD TO GET—  
EVEN IN YOUR OWN PLANT



AMKOR Electronics Inc.  
41 Greenlawn Road Paoli, PA 19301  
Telephone: (215) 687-2660  
TELEX: 83-1487

## AMKOR IS KOREA IN AMERICA

The management and service arm of Amkor is located in the United States. The scheduling of plant production is done in Paoli to make sure customers get delivery as promised. The U.S. management includes production engineering services, technical services, delivery scheduling, export-import handling, and direct customer relations. Because of this, Amkor clients get all the benefits of having "their own" assembly line while enjoying *all* the savings of offshore assembly.

### JAMES JOOJIN KIM

President  
Paoli, Pennsylvania  
B.S., Wharton School, M.A. Economics,  
University of Pennsylvania. Mr. Kim is a  
specialist in international trade and, in addition  
to teaching management and economics for  
nine years, has served as consultant to U.S.  
and Korean firms. By establishing Amkor  
Headquarters in the U.S., Mr. Kim has simplified  
purchase of offshore assembly for customers  
by handling all details of overseas shipment,  
customs, and international clearance of funds.

This extra service provides "next door"  
convenience with less paperwork, reduced  
handling, and assured delivery schedules.



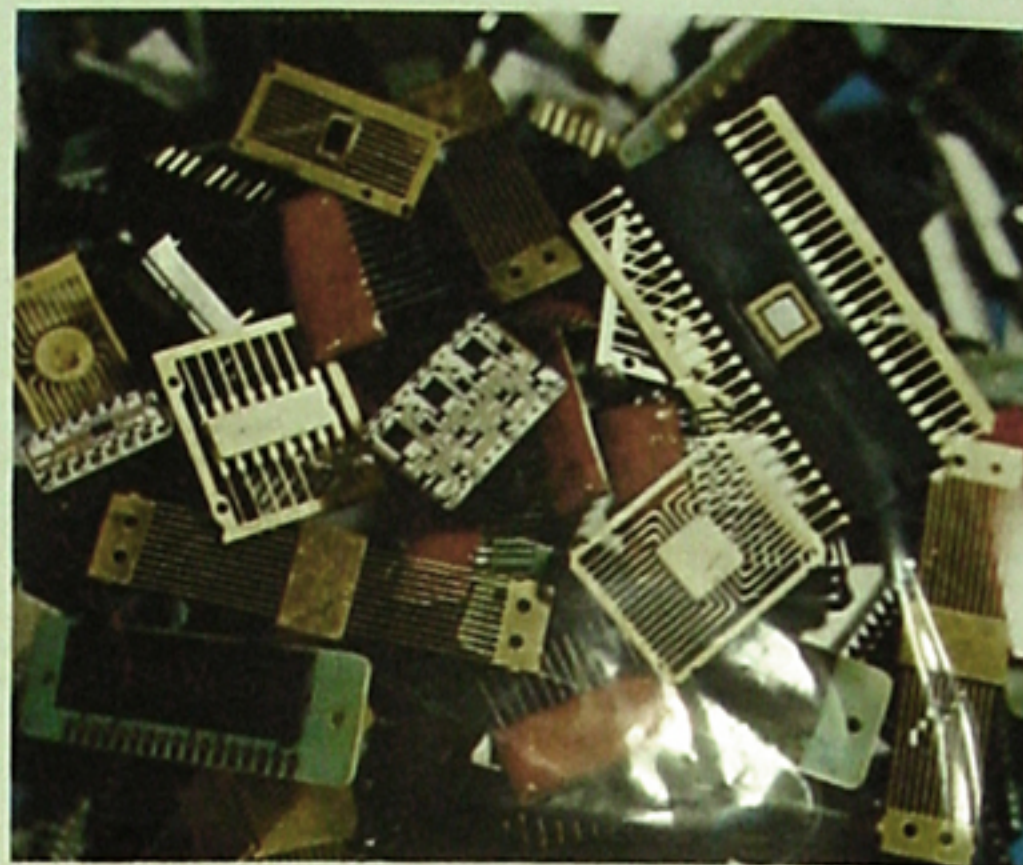
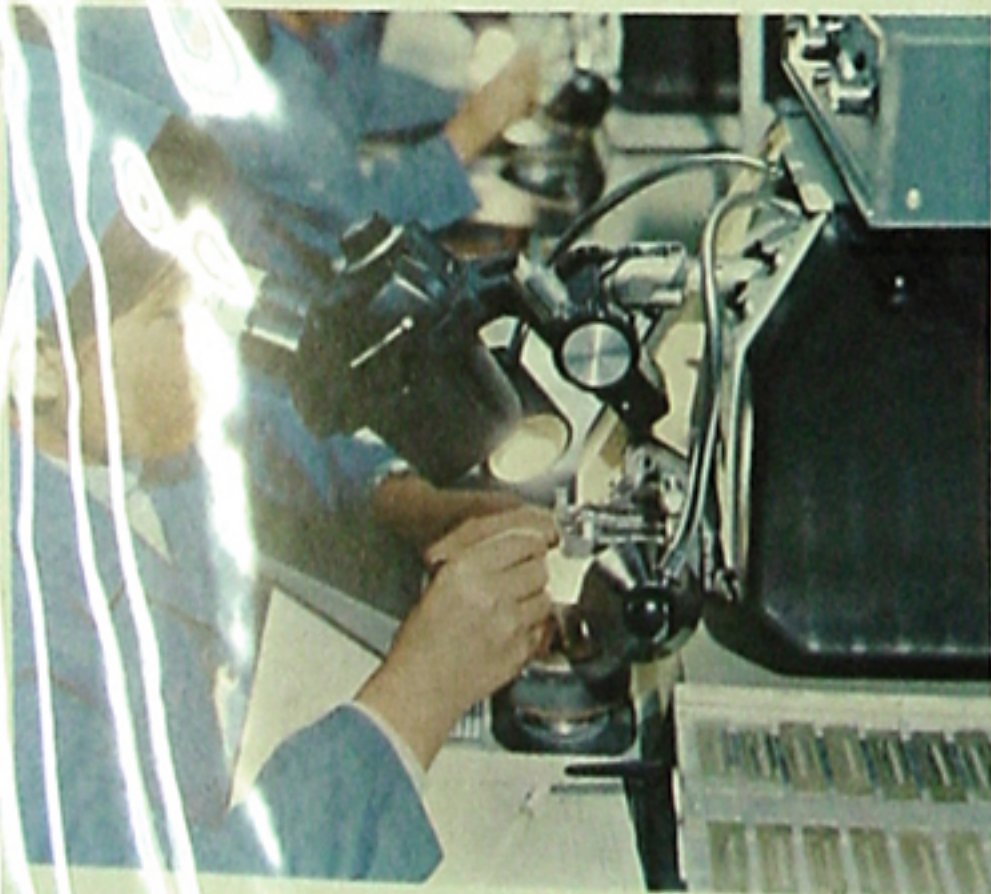
SCRIBING • ULTRASONIC, SCRUBBING, OR MANUAL  
DIE BONDING • ULTRASONIC ALUMINUM, AND GOLD  
THERMAL COMPRESSION WIRE BONDING •  
PURIFIED N<sup>2</sup> ATMOSPHERE CAP WELDING • BRANDING  
• ENVIRONMENTAL TESTING

## FROM SCRIBING TO BRANDING, AMKOR ELECTRONICS OFFERS HIGH YIELD CAPABILITIES

Amkor is fully equipped to assemble TO-3's, TO-18's, High Frequency units, MOS type units, Hybrids, DIP Hermetic sealed units, plastic molded packages, Printed Circuit boards, other components and systems.

### PRODUCTION:

All assembly is done in our Seoul plant, (ANAM INDUSTRIAL CO., LTD. IN SEOUL KOREA) by our people, on American equipment. Close supervision and in-line inspection is carried out to mil. std. 883, class C. Also environmental testing including shock, thermal cycling, drops and leak testing is performed on statistical sample or 100% inspection basis. Electronic testing may be arranged on customer supplied equipment.



### PARTS SUPPLY:

Normal procedure is to assemble from parts supplied by customer. We can, if desired, develop overseas sources where advantageous.

### SECURITY:

To safeguard customer's technical information, each production run is separated by code number and color coded traveler. A separate line is set up for assembly of large runs. Customers are invited to visit the plant and may observe their own parts (only) in production.

### PLANNED EXPANSION:

To complement the expanding production facilities in

